

The Wyong Areas Coal Joint Venture proposes to develop a new project referred to as the Wallarrah 2 Coal Project (W2CP).

The Wallarrah 2 Coal Project (W2CP) will involve the underground extraction of export quality thermal coal with associated surface facilities and infrastructure. The project is comprised of an underground longwall mine, a coal handling plant and storage facilities, rail loop and loading infrastructure, an underground drift entry, ventilation shafts and gas management facility.

Key features of the W2CP are:

- The underground extraction of coal by longwall methods at a depth of between 350m and 680m below the surface within the area designated on **Figure 1**.
- Surface facilities on company owned and leasehold land between the Motorway Link Road and the F3 Freeway which will include rail loop, coal stockpiles, workshop and offices. This is referred to as the "Tooheys Road" site as shown on **Figure 2**.
- Construct the main ventilation facilities on company owned land off Hue Hue Road between Sparks Road and the Buttonderry Waste Management Facility. This facility will include the main personnel access to the mine and will include offices and employee amenities.
- Construction of a second ventilation shaft within the Wyong State Forest. This shaft will be an air intake only and will be constructed as mining moves to the west.
- Creation of 300 jobs directly with a minimum of 750 additional jobs created indirectly.
- Local economic benefits in the order \$60 million per annum.
- Average export earnings of over of \$200 million p.a.; and,
- Total revenue to Government of over \$1 billion.

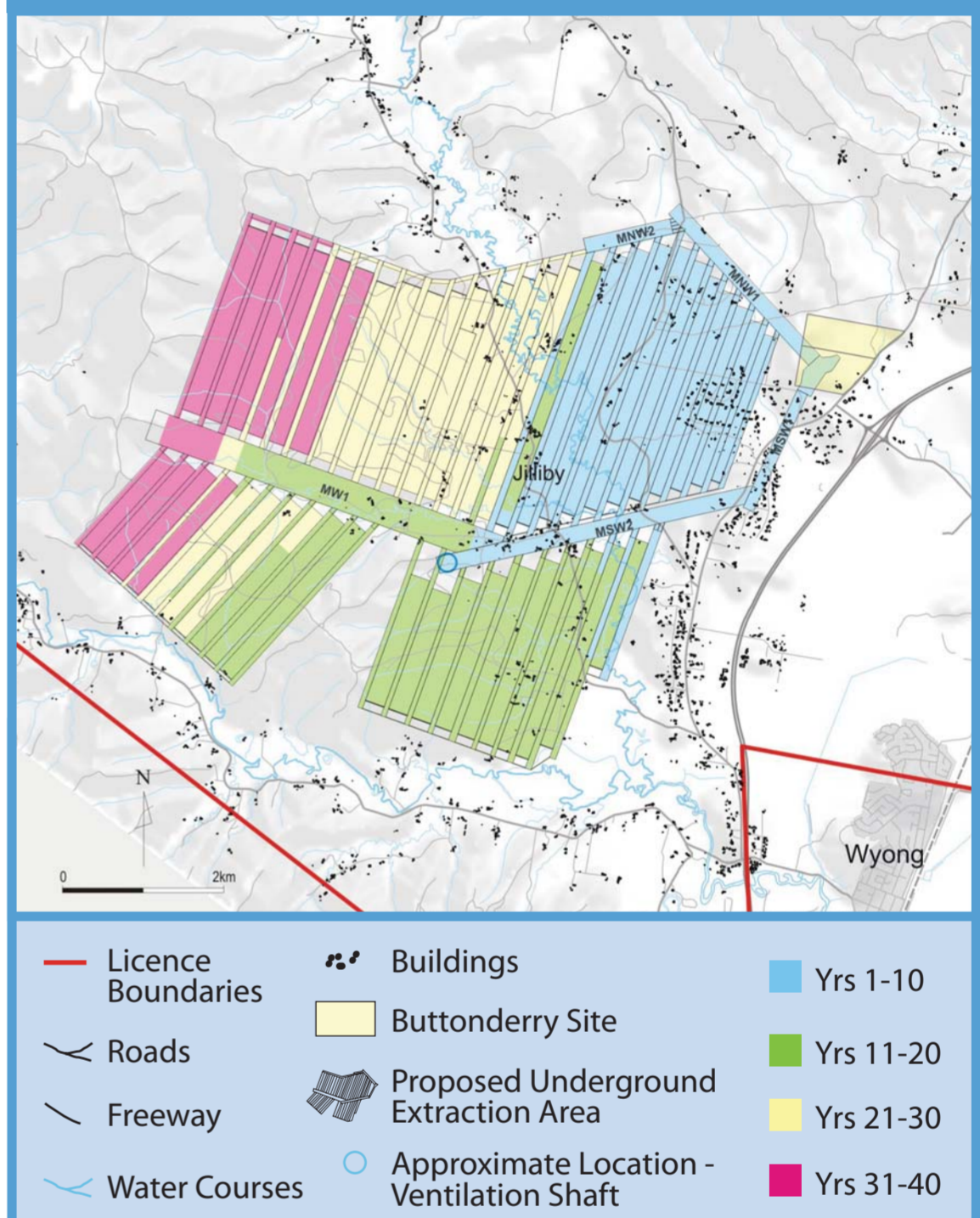
The region's water supply system will be safeguarded

The proposed mine has been designed to minimise its impact on the environment, particularly the local community and water supply system. The proposed underground mining area has been significantly reduced as a result of geological and environmental constraints and the views of the community.

The current mine plan, shown on **Figure 1**, extends beneath a portion of the Hue Hue rural residential area and the Dooralong Valley before progressively mining beneath the Wyong State Forest area. Longwall mining will not take place directly beneath the Wyong River nor within the vast majority of the flood plain of the Yarramalong Valley.

Should Project Approval be obtained, Subsidence Management Plans will be prepared during 2008 prior to construction commencing. First longwall coal production is anticipated in late 2010. No longwall mining will take place in or under the Mangrove Creek Dam or Mardi Dam catchments nor under Wyong Creek Weir or any other water supply infrastructure or important wetlands.

▼ **Figure 1: Mine Plan**



▼ **Figure 2: Tooheys Road Site**

