



Sustaining energy for the future

www.wallarrah.com.au

Wallarrah 2 Mine: A \$1billion Boost to Local Economy

The Wallarah 2 Coal Mine would bring more than one billion dollars in economic benefits to Wyong and the Central Coast in construction phase in the first three years, a study by the Central Coast Research Foundation shows.

The research shows that once mining begins about \$200 million a year will flow into the economy.

The Research Foundation study has revealed that with a total initial expenditure to develop the mine of more than \$700 million of which \$600 million would be spent on the Central Coast, the total impact on the Central Coast economy will be more than \$1 billion.

The research shows that an estimated 1800 jobs are expected to be created on the Central Coast in the first year alone of the construction phase. About 700 jobs are expected to be created when mining begins.

Work in the first three years will include construction of what is expected to be one of Australia's longest mining access tunnels, a rail loop and associated works. About \$168 million will be spent in the region on construction related matters, \$270 million on machinery, \$59 million on transport equipment, \$26 million in retail and \$20 million in property and business services.

The completed Research Foundation assessment will form part of the Environmental Assessment for the project. It is one of many specialist reports required for the Environmental Assessment report.

Mining to Continue in Wyong Says Inquiry

... coal mining OK ... water supply not compromised

The Chikarovski Report has established that there are no significant reasons why coal mining should not be permitted in the Wyong Local Government Area.

The report also said the coal resource in the area is valued at billions of dollars.

The Strategic Inquiry Panel found that mining of this resource is unlikely to compromise in any significant way the water supply of the Central Coast.

The Minister for Planning has advised that the Wallarah 2 proposal will be subject to a further specific inquiry. The project approval will involve the full extent of the rigorous and comprehensive assessment and consultation processes required in NSW.

Environment and Community Manager, Peter Smith, said the inquiry findings open the way for the Wallarah 2 Coal Project to submit an Environmental Assessment.

What the Strategic Inquiry report said

"It seems clear, therefore, that the importance of groundwater within the Wyong Valleys to the Central Coast's water supply has been exaggerated."

"The Panel therefore considers that community concerns about the potential for the Wallarah 2 proposal to significantly impact the shallow alluvial groundwater resources of the Wyong Valleys are unfounded."

"subsidence-induced hydraulic connectivity between Wyong River, Jiliby Jiliby Creek or their alluvial systems and any underlying mine workings is extremely unlikely."

"subsidence is unlikely to compromise in any significant way the water supply of the Central Coast."

"while groundwater sourced from the Wyong River and Jiliby Jiliby Creek alluvial systems does make a significant contribution to the water supply of the Central Coast (estimated to be between 3.5 and 6%) any mining activity would not significantly impact on the existing groundwater levels or groundwater availability."

"Existing standards for assessment and monitoring procedures for noise provide significant safeguards against noise impacts for new mine developments"

"concerns over dust and noise appear to have been substantially overstated"

"The Wallarah 2 Coal project website contains a substantial body of information regarding the project, including copies of all submissions made by WACJV to the Inquiry and associated technical reports."

Environmental Assessment will Respond to Requirements

The Environmental Assessment report of the proposed Wallarrah 2 Coal Mine will be completed as soon as possible after the issuing by the NSW Government of the Director General's Requirements.

This is expected to follow soon after the consideration of submissions in response to the Strategic Inquiry.

Manager Environment and Community, Peter Smith said: "We are determined to present an Environmental Assessment report that will provide the Government and the wider community with the confidence to support the mine."

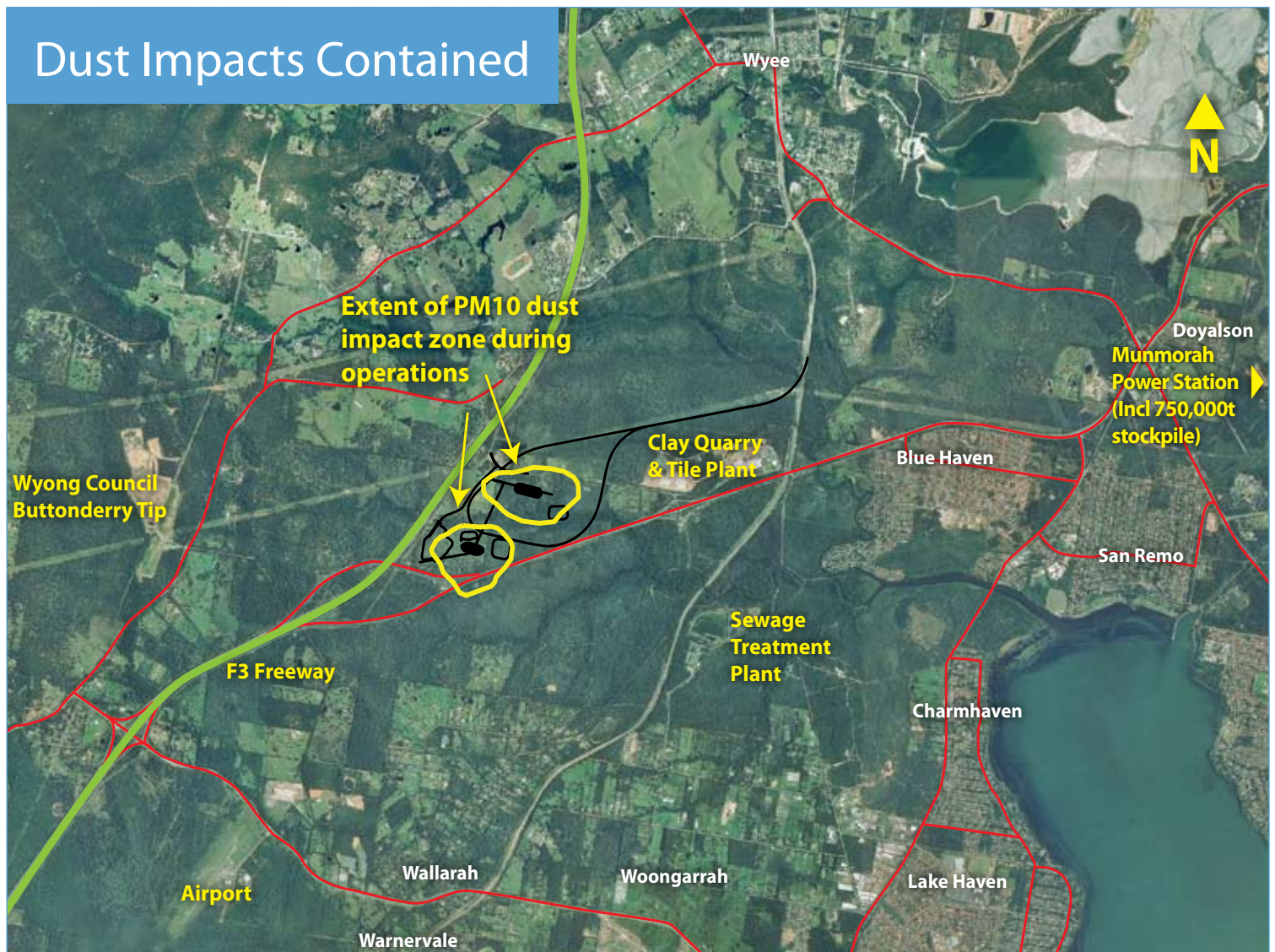
"The Strategic Inquiry Panel has found that 'community concerns about the potential for Wallarrah 2 proposal to significantly impact the shallow groundwater resources of the Wyong valleys are unfounded'.

"Also, the work by some of the country's best experts in air quality and noise assessment shows that dust and noise impacts will be well within allowable limits and for the most part contained well within our site boundaries and well away from communities such as Blue Haven, as clearly described in a project community newsletter back in 2007," Peter Smith said.

He said it was important for the community to understand that the Joint Venture could not complete the detailed studies required for an EA report, or make them available to the community, until the government issued its requirements). These could only be issued after the Strategic Inquiry process is complete.

The inquiry report also recognised the significant quantity of information that has been made available by Wallarrah 2 about the project, particularly on its website and in newsletters.

Dust Impacts Contained



▲ Figure 1. Tooheys Road Surface Facilities: Predicted Dust Impact Area (Average 24 hour PM10 Compliance Limit)

Features of the Wallarah 2 Project

The Wallarah 2 Coal Mine will set new standards in some areas of mining. It will be the first major new underground mine in NSW for some years and has been designed to readily meet or exceed legislative and regulatory requirements and includes a number of innovations.

Importantly the mine has also been designed to compliment the existing economic strength of the region that already includes a number of coal mines and two major power stations.

As with all new development, this mine must ensure it minimises any potential impacts on the environmental and social fabric of the region.

Commitments:

The only mine plan that will be submitted to the NSW Government will be one that safeguards the regions water regimes from impacts from mining.

The mine will be operated in ways that minimise adverse impacts on air quality. Procedures will be implemented to ensure emissions are properly managed on site and have minimal impact on residential areas.

The mine will be operated in ways that ensure noise impacts are generally contained to the immediate area of the operating facility.

The mine will aim to be a valued member of the Central Coast and Wyong communities.

The mine will be a place that provides safe and rewarding workplaces and opportunities.

Design features:

The mine will have two surface facilities sited in areas appropriate for industrial development. The coal handling site at Tooheys Road is zoned industrial and is surrounded by other industrial operations and infrastructure including a major clay

quarry and tile manufacturing plant, Main Northern Rail Line, major power line corridors, the F3 and the Motorway Link Road, and a Council sewage treatment plant.

Coal will be moved from the underground workings to the surface facility via tunnel and covered conveyor.

Coal will be transported from the site only by rail via a dedicated loop that has been designed to minimise noise, ecological and visual impacts.

The Buttonderry site, next to the Wyong Council waste disposal centre, will house administration facilities for the mine and provide people access and ventilation to the mine via a shaft.

The mine plan, that is the way in which coal will be extracted, has been designed to minimise surface impacts, particularly where homes and other structures are situated.

Surface Facilities Ideally Located



▲ Figure 2. Land use context of the proposed surface sites showing relative isolation from residential areas

... A Trust in the Future

Environment and Community Manager, Peter Smith, said the company was still interested in hearing suggestions and comments from members of the community about how a Community Trust might be developed and operated if the mine proceeds.

"The Trust is for supporting programs beyond what will be required of the company within the normal conditions of consent and while we have many ideas ourselves we want to hear from the community how they think we can best contribute.

"We are not putting any restrictions at this stage but as a guide people might want to think about programs that provide ongoing education opportunities, or which aid the disabled or environmental initiatives."

Interested members of the community can contact Peter Smith by telephoning 02 4352 7500 or email psmith@wallarah.com.au



Wallarah 2 Coal Project's, In-sik (Thomas) Kim and Peter Smith presented the company's contribution for the Central Coast activities of the Youth Development Trust.

Mine Proposal will Meet 80 Guidelines

The Environmental Assessment (EA) report for the proposed Wallarah 2 Coal Mine will contain conclusions that consider the requirements of almost 80 technical and policy guidelines.

Those guidelines and policies cover a wide range of matters that include air quality, economic and social, energy,

flora and fauna, greenhouse gas, hazards and risks, heritage, soil, water, subsidence, traffic, visual and waste.

The EA is required to cover much wider areas of information than was required for the Strategic Inquiry. The EA must detail the specific potential impacts of the Wallarah 2 Project.

Youth Continues as Focus For Community Contributions

While the company has provided support for a range of community interests, from business to sport, youth programs in the Wyong area have long been a major focus.

Environment and Community Manager, Peter Smith, announced in early 2008 that the company was now a major supporter of the widely lauded Newcastle and Hunter Youth Development Trust enabling it to further expand its outstanding work to the Wyong Shire area. That funding has been continued for 2009.

The Chairman of the Trust, Mr Peter Murray, OAM, said the scheme provided youngsters with the opportunity to participate in sport but with particular focus on team building and leadership that encourages them to aim for personal goals.

"Our support comes from companies

related to the coal mining industry, and other local companies who all recognise the importance of putting something back into the community and the well-being of the future generations of the regions. They unselfishly provide assistance to ensure we can continue our work in many different sporting and healthy lifestyle programs along with training programs for coaches and referees to enable a strong support base."

The Trust has supported more than 4,000 children in regions as far afield as Gloucester, Scone and Coffs Harbour since its inception in 2005.

Among the company's earlier involvement with youth in the Wyong area was the \$75,000 contribution to the Salvation Army's innovative Youth 2000 Project, which included establishment of an award-winning sound recording studio in the Wyong Youth Centre.

Contact Us

We hope you find the newsletter valuable but as always we welcome your inquiries and comments that you can direct either by:

Telephone: 02 4352 7500
Email: info@wallarah.com.au
Website: www.wallarah.com.au

Interview: Our offices are at 25 Bryant Drive, Tuggerah.
You are welcome to visit but it is advisable to telephone first to ensure the person who can best help is available.